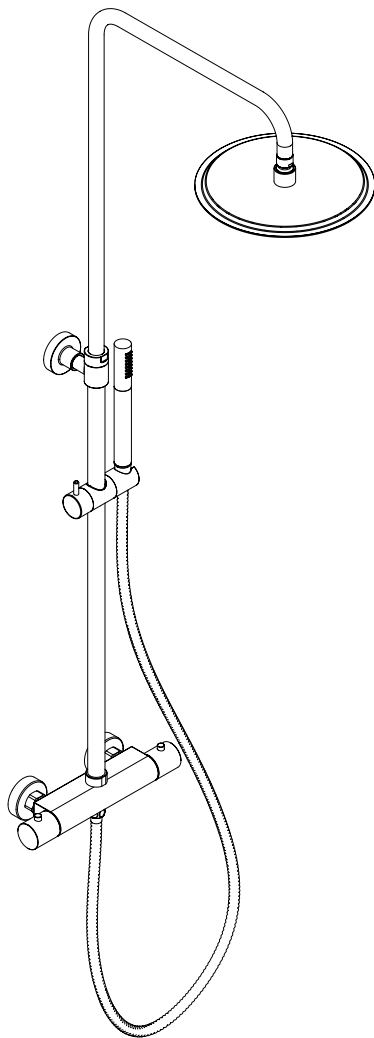




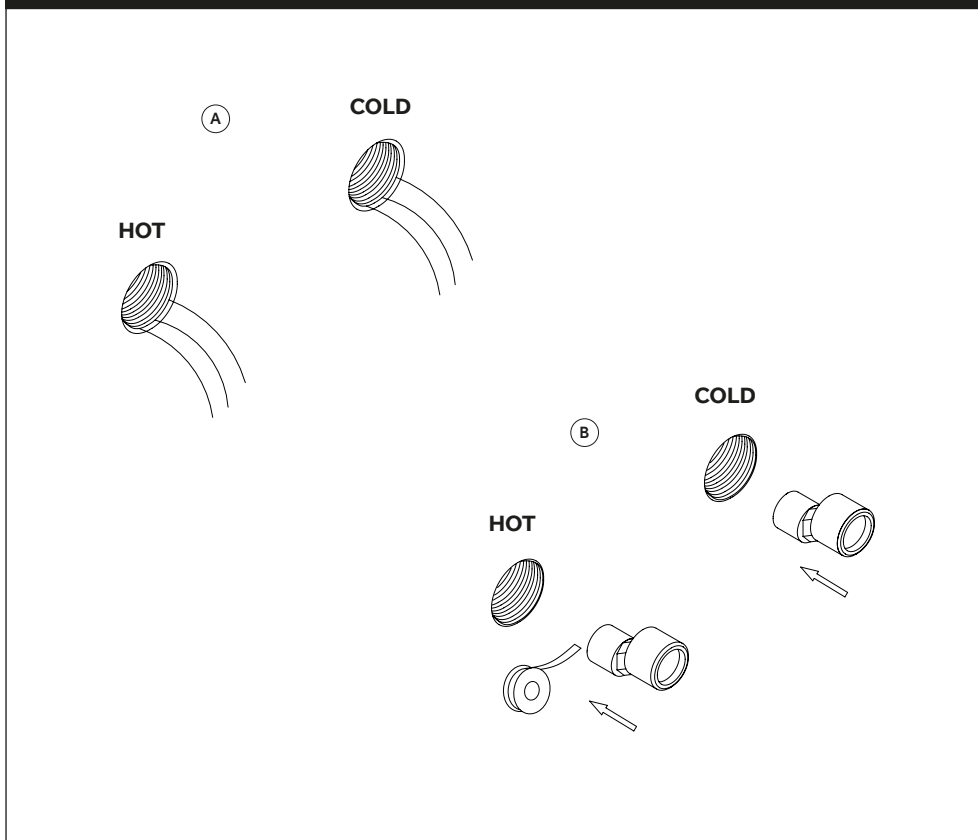
COALBROOK



SHOWER SYSTEM INSTALLATION

CO3000

S-CONNECTOR INSTALLATION DIAGRAM (STEPS 1 - 2)

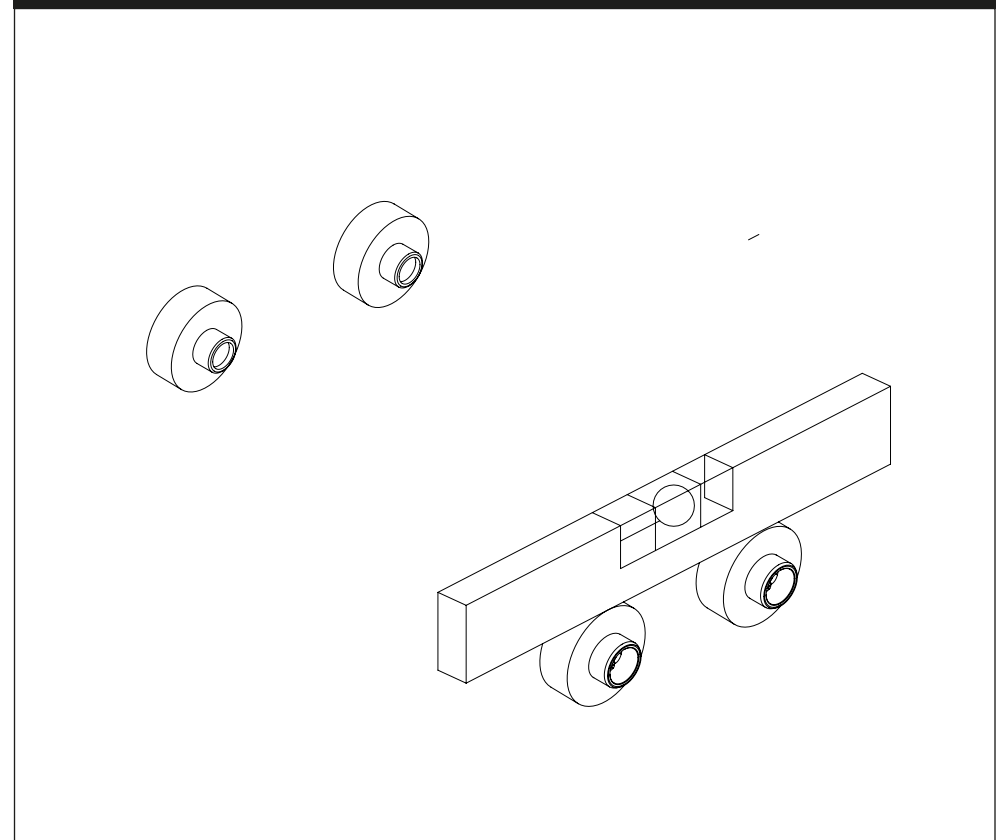


1. Position backplate elbows in the wall at 150mm centres. S-unions allow adjustment from 130 – 170mm. See diagram on page 8 to determine required height.
2. Rinse debris from pipes (A).
3. Wrap the G½ thread of the S-connector by PTFE tape, insert the S-connector into the hole in clockwise direction (B).

COALBROOK

www.coalbrookuk.co.uk | info@coalbrookuk.co.uk

S-CONNECTOR INSTALLATION DIAGRAM (STEPS 3 - 4)

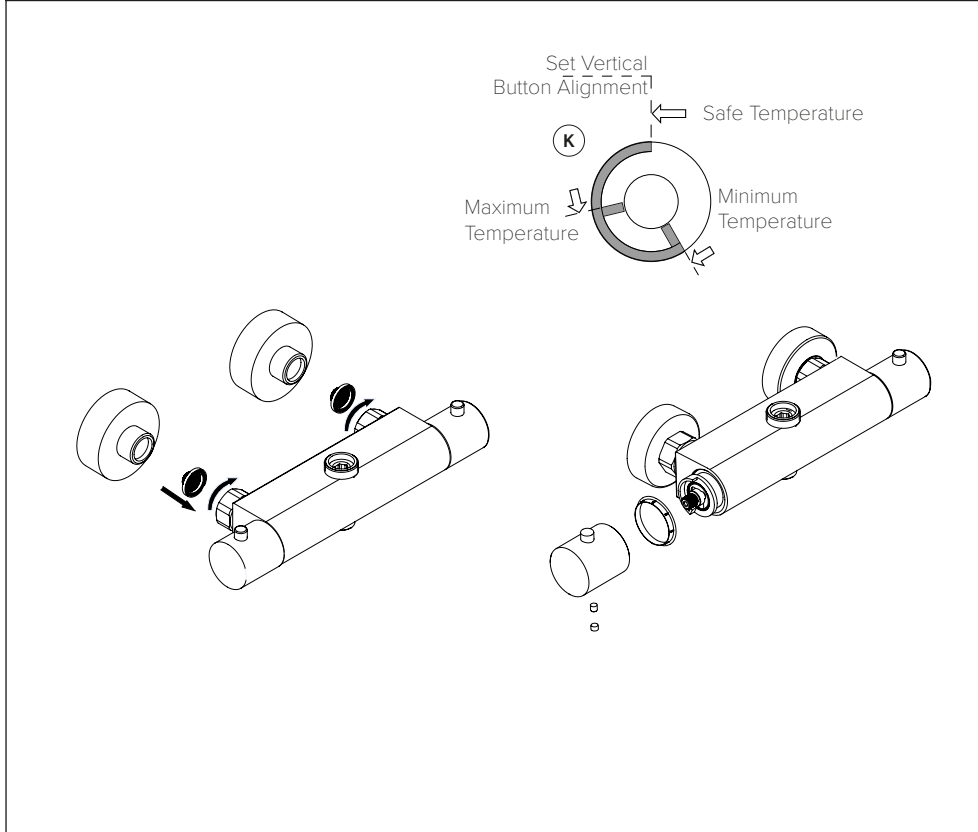


3. Install the wall flange to the S-connector in a clockwise direction.
4. Use the spirit level to make sure that it is horizontally level.

COALBROOK

www.coalbrookuk.co.uk | info@coalbrookuk.co.uk

MIXER INSTALLATION DIAGRAM (STEPS 5-10)

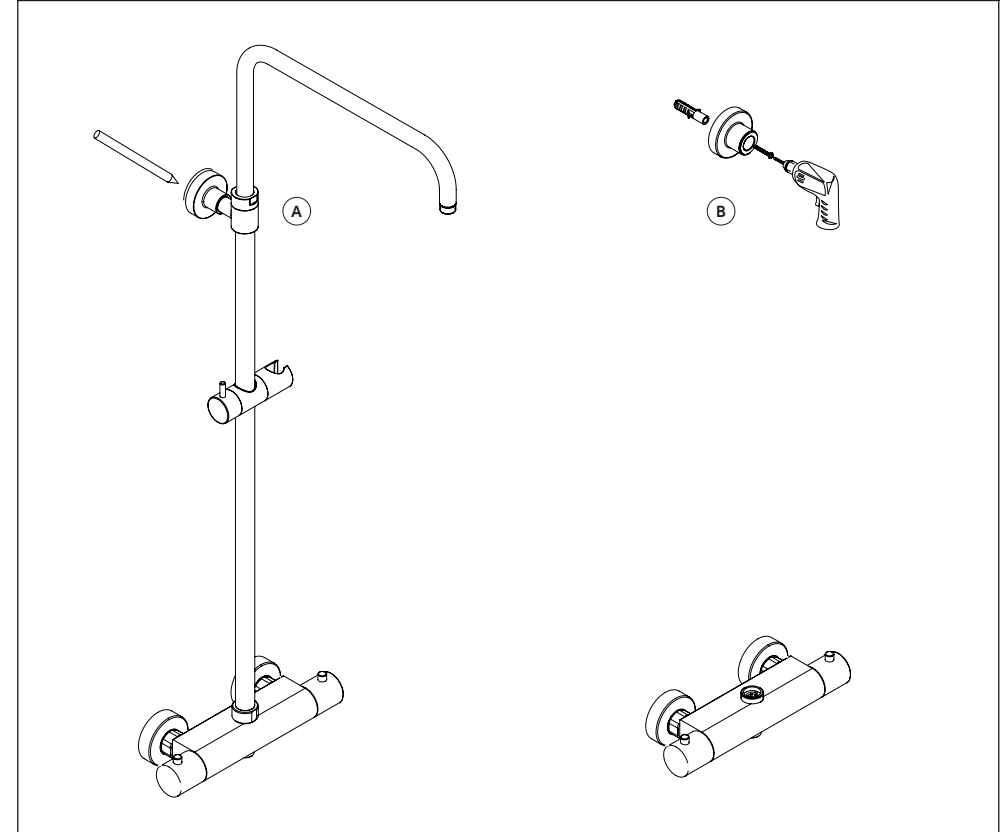


5. Insert the filter washer (filter net face outside) to the hexagonal nut, then install the mixer to the S-connector.
6. Finish the installation of the mixer.
7. To adjust the 'safe' temperature setting (factory set to 38°C) remove the handle assembly and turn the spindle on the thermostatic cartridge until the water temperature reaches the desired level. This should be set as the 'Safe Temperature'
8. Locate the temperature stop (K) onto the cartridge spline with the safe temperature locator in a vertical position.
9. Locate the handle assembly onto the thermostatic cartridge spline (L). Ensure that the lever is set vertically at the safe temperature position before securing.
10. Secure the handle assembly by using the provided grub screw underneath (M). The grub screw can then be concealed by pushing the blanking plug into the empty hole on the underside of the handle assembly.

COALBROOK

www.coalbrookuk.co.uk | info@coalbrookuk.co.uk

THERMOSTATIC CONTROL INSTALLATION DIAGRAM (STEPS 11-12)

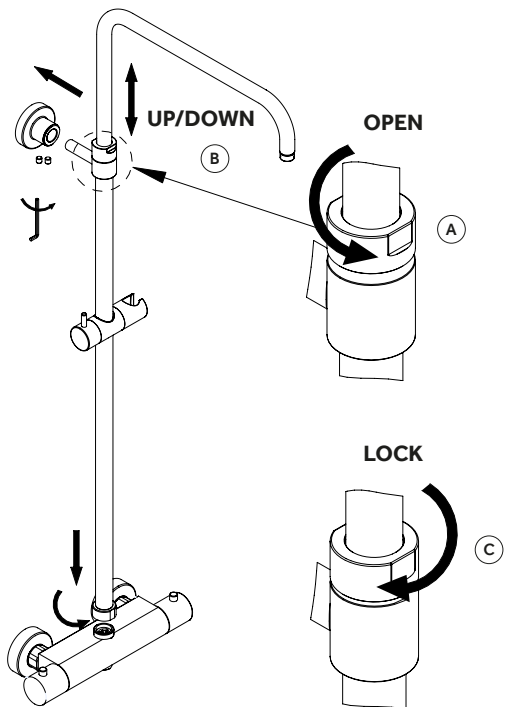


11. Offer the arm to the wall, marking where the flange sits (A).
12. Install the wall flange (B).

COALBROOK

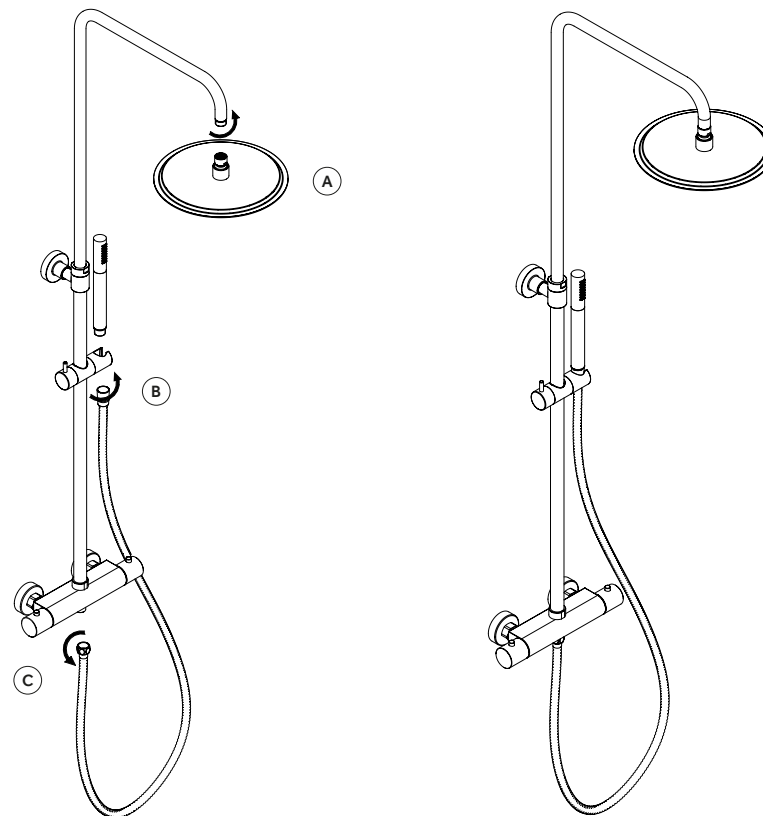
www.coalbrookuk.co.uk | info@coalbrookuk.co.uk

SLIDE BAR CONNECTION INSTALLATION DIAGRAM (STEP 13)



13. Connect the slide bar to the mixer. Fix the slide bar to the wall flange. Increase or decrease the arm height by rotating the retaining nut anticlockwise (A), moving the main shaft as desired and then locking it into place by rotating the retaining nut clockwise (C).

FINAL SHOWER INSTALLATION DIAGRAM (STEP 14)



14. Install the shower head (A) to the slide bar, then install the hand shower (B) and shower hose (C) to the mixer as shown.

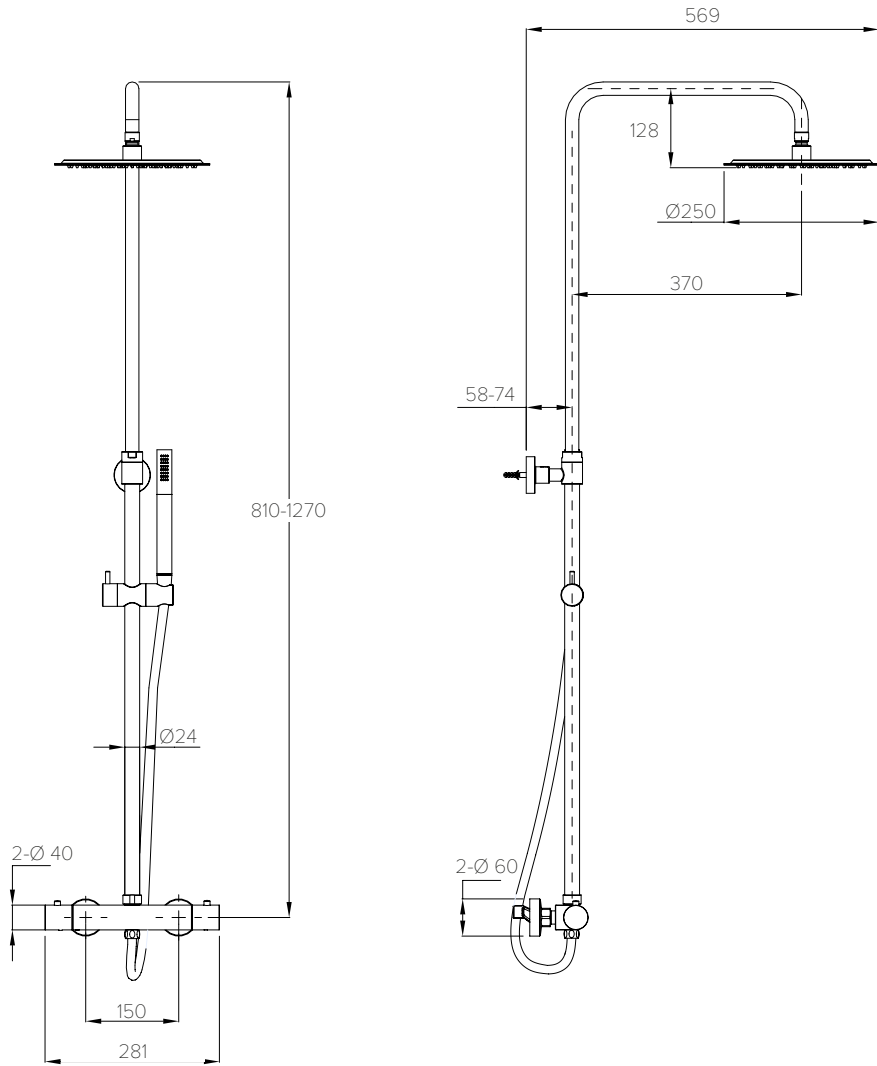
COALBROOK

www.coalbrookuk.co.uk | info@coalbrookuk.co.uk

COALBROOK

www.coalbrookuk.co.uk | info@coalbrookuk.co.uk

SPECIFICATION DIAGRAM (mm)

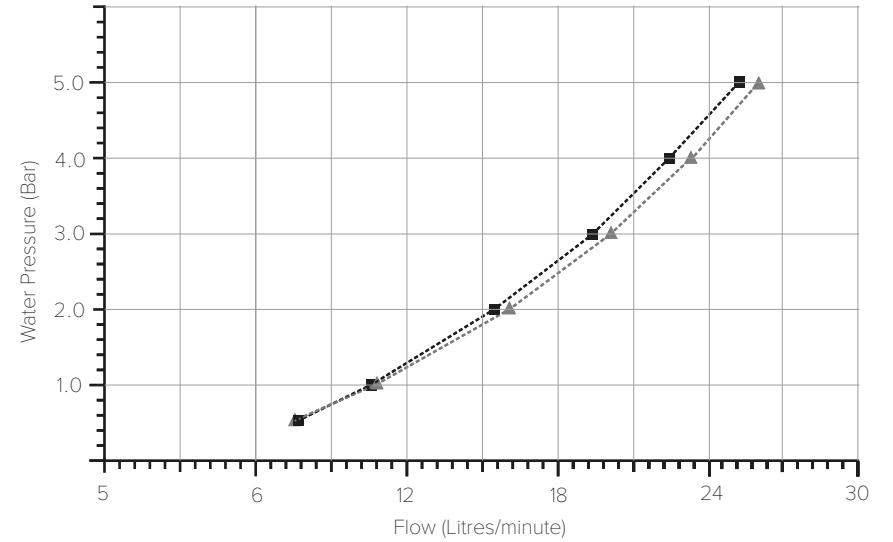


COALBROOK

www.coalbrookuk.co.uk | info@coalbrookuk.co.uk

TYPICAL FLOW RATES

Flow rates shown are free-flowing and may vary subject to restrictions created by installation, pipework layout or application.



Water Pressure (Bar)	Outlet (Litres/minute) ▲	Hand Shower (Litres/minute) ■
0.5	7.3	7.5
1.0	10.7	10.5
2.0	16.0	15.5
3.0	19.9	19.3
4.0	23.3	22.6
5.0	26.1	25.3

COALBROOK

www.coalbrookuk.co.uk | info@coalbrookuk.co.uk



COALBROOK

Whilst every effort is made to ensure the accuracy of these, they are subject to change without notice as part of the company's product development process. The use of trademarks, product design and artwork is subject to licence or agreement. The design registrations, trademark registrations and copyrights are protected by law and the use or reproduction outside the terms of an agreement is prohibited.

The right to modify designs and dimensions is reserved. E & O.E.

v2.0123

COALBROOK

www.coalbrookuk.co.uk | info@coalbrookuk.co.uk